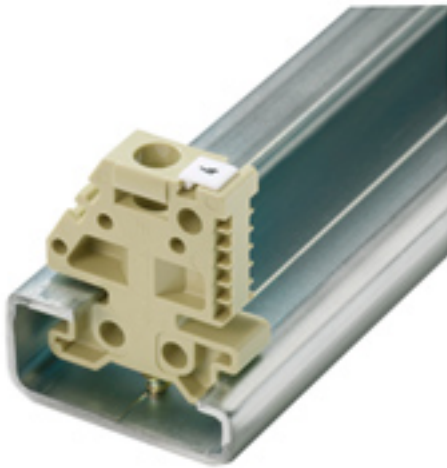


**Accessories**  
**EWK 1**

**Weidmüller Interface GmbH & Co. KG**  
Klingenbergstraße 16  
D-32758 Detmold  
Germany  
Fon: +49 5231 14-0  
Fax: +49 5231 14-292083  
www.weidmueller.com

**Klippon® Connect with clamping yoke Technology**

The high reliability and variety of designs of the terminal blocks with clamping yoke connections make planning easier and optimises operational safety. Klippon® Connect provides a proven response to a range of different requirements.

**General ordering data**

Type	EWK 1
Order No.	<a href="#">0206160000</a>
Version	Accessories, End bracket
GTIN (EAN)	4008190080020
Qty.	50 pc(s).

## Accessories EWK 1

**Weidmüller Interface GmbH & Co. KG**  
 Klingenbergstraße 16  
 D-32758 Detmold  
 Germany  
 Fon: +49 5231 14-0  
 Fax: +49 5231 14-292083  
 www.weidmueller.com

## Technical data

### Dimensions and weights

Width	9 mm	Width (inches)	0.354 inch
Height	27 mm	Height (inches)	1.063 inch
Depth	31 mm	Depth (inches)	1.22 inch
Net weight	4.34 g		

### Temperatures

Continuous operating temp., min.	-50 °C	Continuous operating temp., max.	100 °C
----------------------------------	--------	----------------------------------	--------

### Material data

Material	Polyamide 66	Colour	Beige
UL 94 flammability rating	V-2		

### System specifications

Version	For the terminals	Mounting rail	TS 32
---------	-------------------	---------------	-------

### Additional technical data

Installation advice	Direct mounting	Interlock	for screw fixing
Type of mounting	Screwed		

### Dimensions

TS 32 offset	13.5 mm
--------------	---------

### Classifications

ETIM 3.0	EC001041	ETIM 4.0	EC001041
ETIM 5.0	EC001041	ETIM 6.0	EC001041
UNSPSC	30-21-18-01	eClass 5.1	27-08-10-03
eClass 6.2	27-08-10-03	eClass 7.1	27-08-10-03
eClass 8.1	27-14-11-35	eClass 9.0	27-14-11-35
eClass 9.1	27-14-11-35		

### Product information

Descriptive text accessories	For the WEW 32/1, the hinged tag carrier SchT 15/6 No. 1269060000, with marking labels S 10 and WS 12 can be used.
------------------------------	--

### Approvals

ROHS	Conform
------	---------

### Downloads

Brochure/Catalogue	<a href="#">CAT 1 TERM 16/17 EN</a>
Engineering Data	<a href="#">EPLAN, WSCAD, Zuken E3.S</a>
Engineering Data	<a href="#">0206160000_04520_EWK_1_TS_32_M4X18_STP.stp</a> <a href="#">04520_EWK_1_DXF.dxf</a>