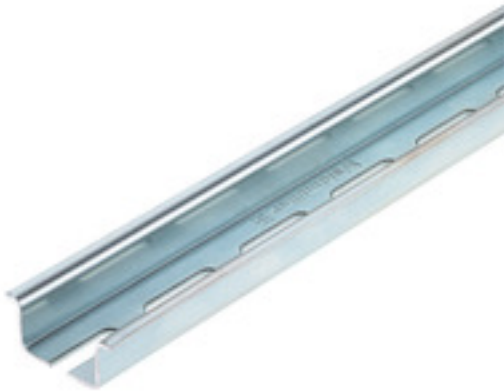


Accessories

TS 35X15/LL 2M/ST/ZN

Weidmüller Interface GmbH & Co. KG
 Klingenbergstraße 16
 D-32758 Detmold
 Germany
 Fon: +49 5231 14-0
 Fax: +49 5231 14-292083
 www.weidmueller.com



Building installation wiring

For building installations, we offer a complete system that revolves around the 10×3 copper rail and comprises perfectly coordinated components: from installation terminal blocks, neutral conductor terminal blocks and distribution terminal blocks to comprehensive accessories such as busbars and busbar holders.

General ordering data

Type	TS 35X15/LL 2M/ST/ZN
Order No.	0236500000
Version	Mounting rail, TS 35, TS 35 x 15, with slot, Steel, galvanized, chromium-plated
GTIN (EAN)	4008190183967
Qty.	2 m

Accessories

TS 35X15/LL 2M/ST/ZN

Weidmüller Interface GmbH & Co. KG
 Klingenbergstraße 16
 D-32758 Detmold
 Germany
 Fon: +49 5231 14-0
 Fax: +49 5231 14-292083
 www.weidmueller.com

Technical data

Dimensions and weights

Width	35 mm	Width (inches)	1.378 inch
Height	35 mm	Height (inches)	1.378 inch
Depth	15 mm	Depth (inches)	0.591 inch
Net weight	625 g		

Material data

Material	Steel	Surface finish	galvanized, chromium-plated
Colour	Silver		

System specifications

Version	with slot	Mounting rail	TS 35, TS 35 x 15
---------	-----------	---------------	-------------------

Additional technical data

Installation advice	Direct mounting	Type of mounting	Screwed
---------------------	-----------------	------------------	---------

Mounting rail

Drill-hole diameter	5.2 mm	Short circuit strength corresponds to E-Cu wire	25 mm ²
Slit gap	11 mm	Slit length	25 mm
Slit width	5.2 mm	Slotted drill holes	Yes
Solder eyelet hole diameter (D)	5.2 mm	Spacing of holes, centre-to-centre	36 mm
Thickness	1.5 mm		

Rating data

Standards	DIN EN 60715
-----------	--------------

Classifications

ETIM 3.0	EC001285	ETIM 4.0	EC001285
ETIM 5.0	EC001285	ETIM 6.0	EC001285
UNSPSC	30-21-18-01	eClass 5.1	27-14-06-04
eClass 6.2	27-14-11-43	eClass 7.1	27-14-11-43
eClass 8.1	27-14-11-43	eClass 9.0	27-14-11-43
eClass 9.1	27-40-06-02		

Approvals

ROHS	Conform
------	---------

Downloads

Brochure/Catalogue	CAT 1 TERM 16/17 EN
Engineering Data	EPLAN, WSCAD, Zuken E3.S